

AM Directional Systems

Multiple Solutions

Tunwall Radio has designed and built a wide range of phasor and transmitter controllers, from simple layouts of two patterns and four contactors to more complicated systems involving 29 contactors.

AM controller control outputs are 24VDC, so no high voltage is wired to the controller. Phasing systems with contactor "pilot" relays can be connected directly. If your station's contactors get 120 or 240 VAC from the control system, an optional small rack mount cabinet with 24 volt power relays to switch the AC is available.

Tunwall Radio can also design and build a master wiring panel in NEMA enclosure, if you would like to centralize tower wiring before the control rack.

More detailed photographs of our controllers are available at our website, www.tunwallradio.com. You can request a free quote online or call us at 330.995.9642.

TUNWALL RADIO LLC

330.995.9642
216.272.7505
www.tunwallradio.com
mobile.tunwallradio.com
info@tunwallradio.com

TUNWALL RADIO



AM Directional Systems

Custom phasor and
transmitter controllers

www.tunwallradio.com

AM Directional Control Systems from Tunwall Radio



Front panel indicators show RF connections

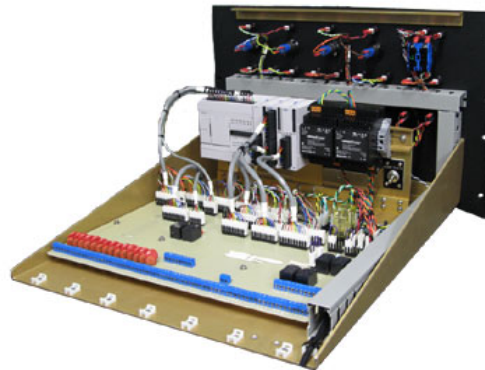
Safe Switching

Tunwall Radio AM directional controllers offer a safe switching solution to protect expensive AM contactors. The controller uses a timed sequence to remove RF power, move the contactors and verify positions before RF power is restored. There is also protection for a test load, as the controller's load interlock circuit will not allow the off-air transmitter to operate unless the load's air or water is running.

Unique Design

The control systems are custom designed for your station's towers, patterns, transmitters and test loads. Each controller features key switch selected local-off-remote modes, as well as an emergency bypass mode. Front panel indicators and the contactor position tally system are powered by dual redundant 24 volt power supplies.

Our controllers are built on aluminum panel and shelf units. Labels for front panel controls and indicators are engraved anodized aluminum plates.



Our AM directional systems save space and reduce hardware expense by using programmable logic controllers.

Convenience and Reliability

Tunwall Radio controllers will save you time because there is no need for you to program anything. The pre-programmed PLC (programmable logic controller) provides control and logic for the coaxial switch and transmitters. The NAIS PLCs used in our controllers have proven to be extremely reliable. They are designed to withstand typical challenges to electronic equipment in industrial environments; heat, dust, vibration, magnetic fields and power line transients.

AM Directional Controllers

- *No user programming required*
- *Customized for your station's transmitters and antenna system*
- *Key switch selected local-off-remote modes*
- *Remote status and control connections*